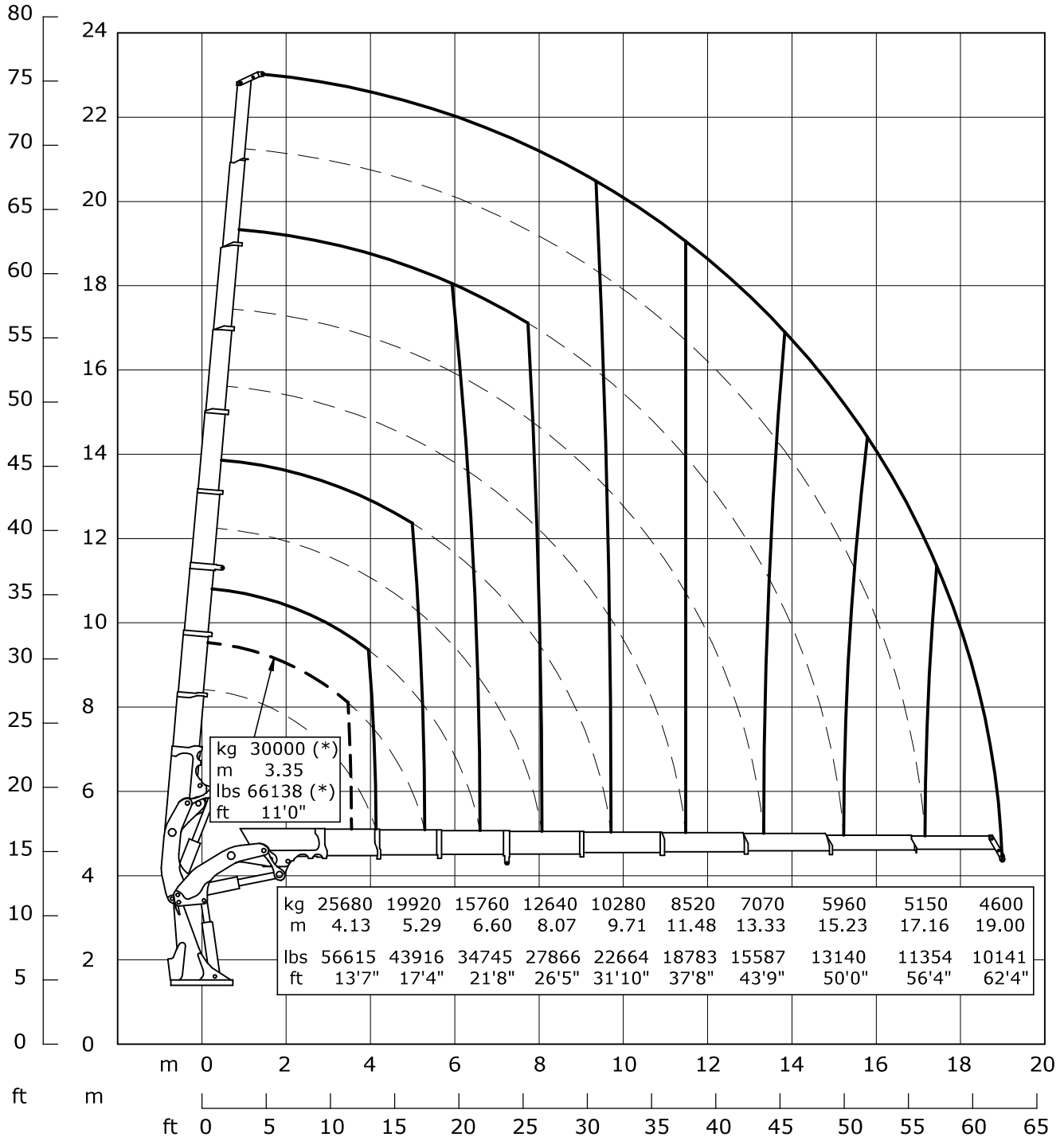




# 135000 E9 A.S.C. Plus

## DIAGRAMMA DELLE PORTATE - LIFTING CAPACITY CHART



(\*) con gancio su 3° idraulica e dispositivo per il bloccaggio delle prolunghe fornibile in opzione  
 (\*) with hook on the 3rd extension by using the locking device of the extensions supplied as option

DATI, DESCRIZIONI ED ILLUSTRAZIONI SONO FORNITI A TITOLO INDICATIVO  
 E NON IMPEGNATIVO, POSSONO VARIARE SENZA PREAVVISO.  
 DONNEES, DESCRIPTIONS ET ILLUSTRATIONS SONT FORNIES A TITRE INDICATIF  
 ET N'ENGAGENT PAS LE CONSTRUCTEUR, QU'IL PEUT LES CHANGER SANS PREAVIS.  
 CHARACTERISTIC AND DESCRIPTIONS ARE GIVEN AS INFORMATION AND ARE NOT  
 BINDING, THEY ARE SUBJECT TO CHANGE WITHOUT NOTICE.  
 AGABEN, BESHREIBUNGEN, SIND NUR MASSGEBEND UND NICHT VERBINDLICH.

D-846/1 REVISIONE 00